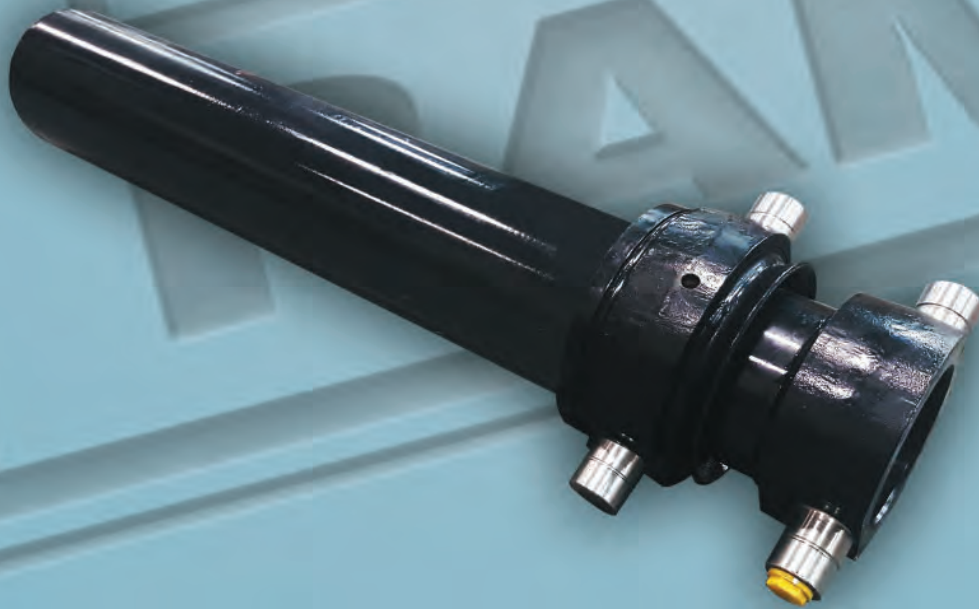




# TRUCK & TRAILER HOIST CYLINDERS



**OEM HYDRAULIC CYLINDER SPECIALISTS**



# TRUCK AND TRAILER HOIST CYLINDERS

**RAM** Truck and Trailer Hoist cylinders are high quality single acting telescopic cylinders. They are specifically designed for use on dump truck bodies, dump trailers, and other general hoist applications.

The RAM Truck and Trailer Hoist cylinder design features enhanced capabilities over competitive designs including relative ease of installation and interchangeability with existing cylinders. One key feature of the RAM Truck and Trailer Hoist cylinder is its optimized internal componentry. RAM uses high quality materials to ensure a long working cylinder life for your equipment.

## DEPENDABLE LIFTING CAPACITY

Rated at up to 3000 PSI, RAM Truck and Trailer Hoist cylinders are built with high strength materials to provide reliable performance for lifting capacity. A superior internal seal design ensures the cylinder can operate efficiently and reliably in truck hoist applications.

## OPTIMIZED INTERNAL COMPONENTRY

With extensive experience in truck hoist design and manufacturing, RAM recognizes the demand for performance required for this specialized application. RAM Truck and Trailer Hoist cylinders feature high quality rod seals, high strength guide rings, and heavy duty wipers as standard features on all models. All of these features enhance the internal durability of the cylinder's components.

## CYLINDER INTERCHANGEABILITY

The RAM Truck and Trailer Hoist cylinder line is designed to be interchangeable with existing industry standard cylinders, including many OEM dump body and trailer cylinders. All RAM hydraulic cylinders offer easy installation and cross compatibility.

RAM understands there are many different variations of Truck and Trailer Hoist cylinders. RAM can modify standard cylinder designs to accommodate OEM specifications. Customized options include:

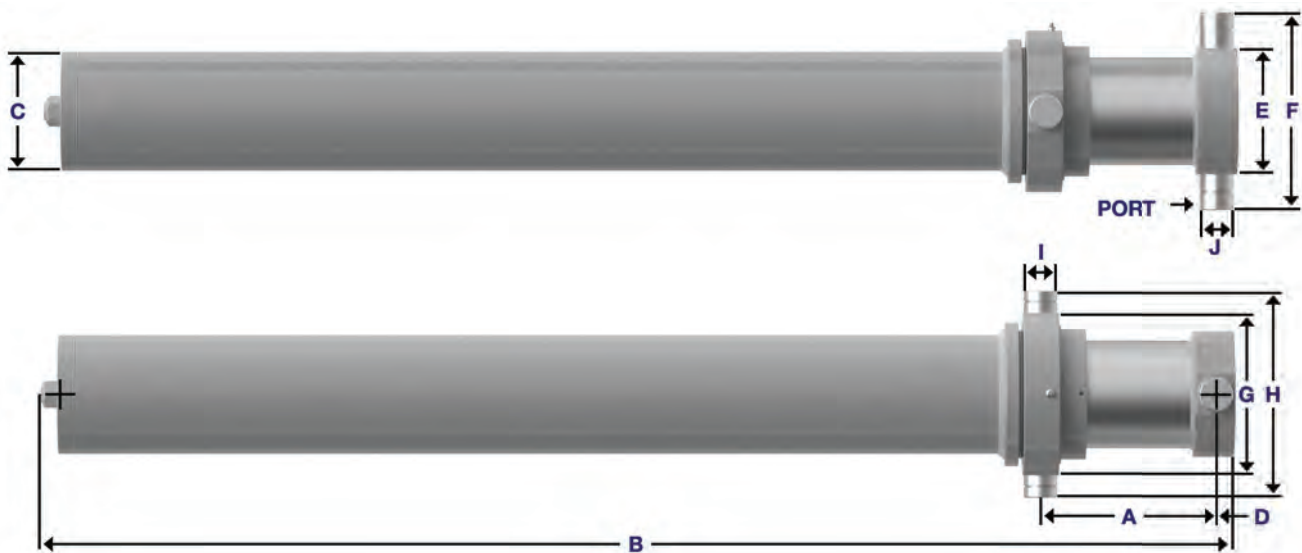
- Non-standard strokes
- Special port requirements
- Custom valve blocks
- Custom mounting designs



# TRUNNION MOUNT TELESCOPIC CYLINDER STANDARD FEATURES

**Intended Use:** Single acting truck box hoist  
**Rated Pressure:** 3000 PSI  
**Rod Material:** High tensile steel, ground and polished  
 hard chrome plated  
**Barrel Material:** High tensile steel/St52.3  
 cold drawn tube

**End Mounts:** High strength steel trunnions with  
 greaseable bearings, greaseable grooves  
**Ports:** SAE standard  
**Internal Seals:** Heavy duty urethane seals  
**Paint Finish:** 2 part urethane black  
**Testing:** 100% full cycle tested



RAM Part Number	RAM Model Number	Stroke (inches)	A	B	C	D	E	F	G	H	I	Ports	Shipping Weight (lbs)
R4508806	CT-5.08-140.00-3	140	6.25	60.90	6.77	2.00	7.00	11.00	9.00	11.50	1.88	SAE-12	394
R4509002	CT-5.87-150.00-4	150	7.63	60.24	7.56	2.00	8.00	12.00	10.19	13.19	2.25	SAE-16	510
R4509011	CT-6.65-185.00-4	185	9.63	64.38	8.62	2.50	9.00	13.00	12.00	15.00	2.25	SAE-16	667
R4509012	CT-6.65-182.00-4	185	9.63	64.38	8.62	2.50	9.00	13.00	11.19	14.19	2.25	SAE-16	673

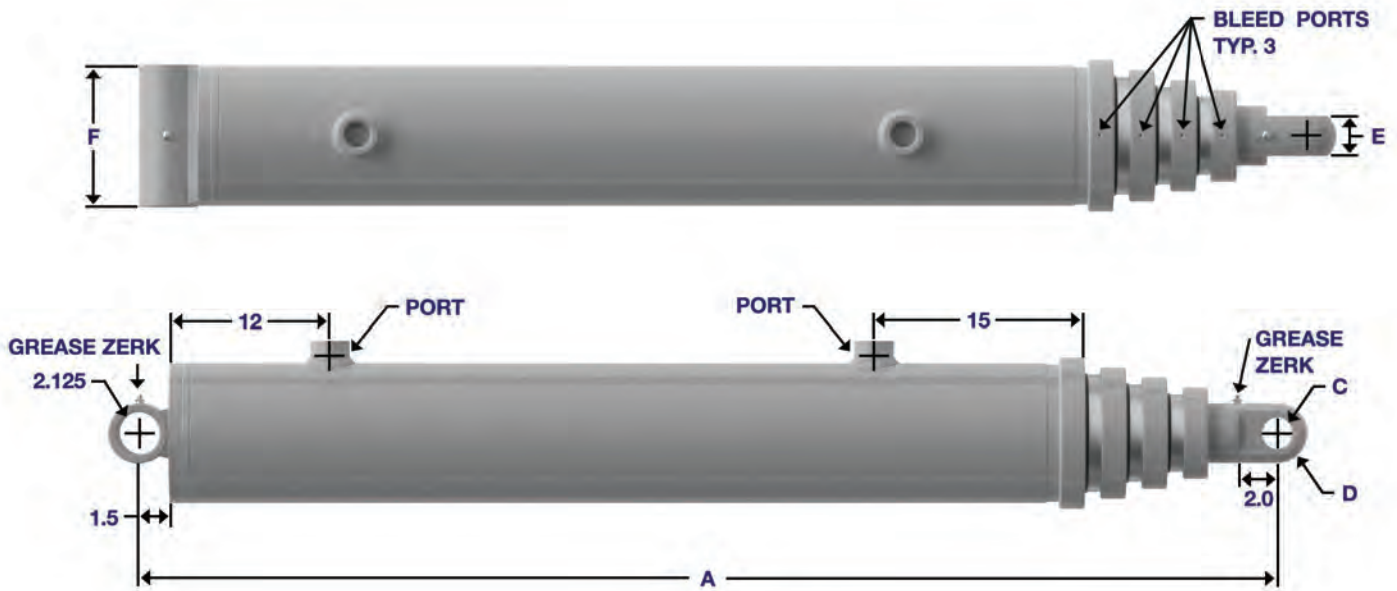
Measurements for A, B, C, D, E, F, G, H, I are in inches.

All specifications are subject to change without notice.  
 Weights are approximate shipping weights

# PIN TO PIN TELESCOPIC CYLINDER STANDARD FEATURES

**Intended Use:** Single acting trailer box hoist  
**Rated Pressure:** 2500 PSI  
**Rod Material:** High tensile steel, ground and polished  
 hard chrome plated  
**Barrel Material:** High tensile steel/St52.3  
 cold drawn tube

**End Mounts:** High strength steel mounts with  
 grease zerks  
**Ports:** SAE standard  
**Internal Seals:** Proven v-packing design  
**Paint Finish:** 2 part urethane black  
**Testing:** 100% full cycle tested



RAM Part Number	RAM Model Number	Stroke (inches)	A	B	C	D	E	F	Ports	Weight (lbs)
R4509123	CT-6.00-156.00-4	156	53.63	7.00	2.06	1.50	1.75	7.13	SAE-16	305
R4509124	CT-8.00-265.00-5	265	71.00	9.45	2.06	1.50	2.00	9.50	SAE-16	730
R4509125	CT-9.38-265.00-5	265	71.38	10.88	2.06	1.50	2.00	10.88	SAE-16	950

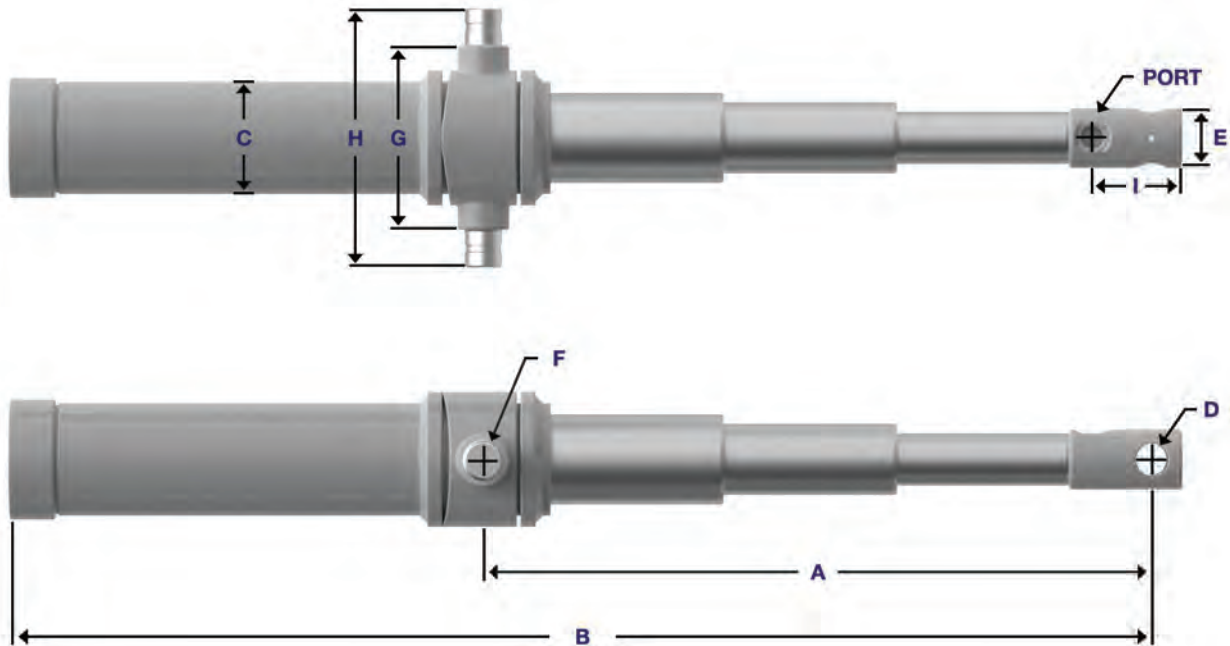
Measurements for A, B, C, D, E, F are in inches.

All specifications are subject to change without notice.  
 Weights are approximate shipping weights.

# SMALL TRAILER TELESCOPIC CYLINDER STANDARD FEATURES

**Intended Use:** Single acting small trailer box hoist  
**Rated Pressure:** 3000 PSI  
**Rod Material:** High tensile steel, ground and polished  
 hard chrome plated  
**Barrel Material:** High tensile steel/St52.3  
 cold drawn tube

**End Mounts:** High strength steel pivoting trunnion  
 Machined pin eye with spherical rod end  
**Ports:** SAE standard  
**Internal Seals:** Heavy duty urethane seals  
**Paint Finish:** 2 part urethane black  
**Testing:** 100% full cycle tested



Size	RAM Part Number	RAM Model Number	Stroke (inches)	A	B	C	D	E	F	G	H	I	Ports	Weight (lbs)
7 Ton	R4509139	CT-3.00-78.00-3	78	7.00	35.50	3.75	1.063	2.00	1.25	6.50	9.00	3.00	SAE-8	70
	R4509140	CT-3.00-90.00-3	90	7.00	39.50	3.75	1.063	2.00	1.25	6.50	9.00	3.00	SAE-8	75
	R4509141	CT-3.00-108.00-3	108	7.00	45.00	3.75	1.063	2.00	1.25	6.50	9.00	3.00	SAE-8	100
12 Ton	R4509142	CT-3.63-78.00-3	78	7.00	34.75	4.43	1.063	2.00	1.50	7.50	10.50	3.00	SAE-8	108
	R4509143	CT-3.63-90.00-3	90	7.00	38.75	4.43	1.063	2.00	1.50	7.50	10.50	3.00	SAE-8	110
	R4509144	CT-3.63-108.00-3	108	7.00	44.75	4.43	1.063	2.00	1.50	7.50	10.50	3.00	SAE-8	135
	R4509145	CT-3.63-120.00-3	120	7.00	48.75	4.43	1.063	2.00	1.50	7.50	10.50	3.00	SAE-8	145
	R4509146	CT-3.63-144.00-3	144	7.00	56.75	4.43	1.063	2.00	1.50	7.50	10.50	3.00	SAE-8	165

Measurements for A, B, C, D, E, F, G, H, I are in inches.

All specifications are subject to change without notice.  
 Weights are approximate shipping weights.



## **RAM** INDUSTRIES INC.

PO Box 5007 33 York Rd E Yorkton, SK S3N 3Z4 Canada

T: 1-877-799-1005

[www.ramindustries.com](http://www.ramindustries.com) • [sales@ramindustries.com](mailto:sales@ramindustries.com)

[www.linkedin.com/company/ram-industries-inc](http://www.linkedin.com/company/ram-industries-inc)



**[www.ramindustries.com](http://www.ramindustries.com)**

Hydraulic Cylinder Design & Manufacturing • Precision Custom Machining